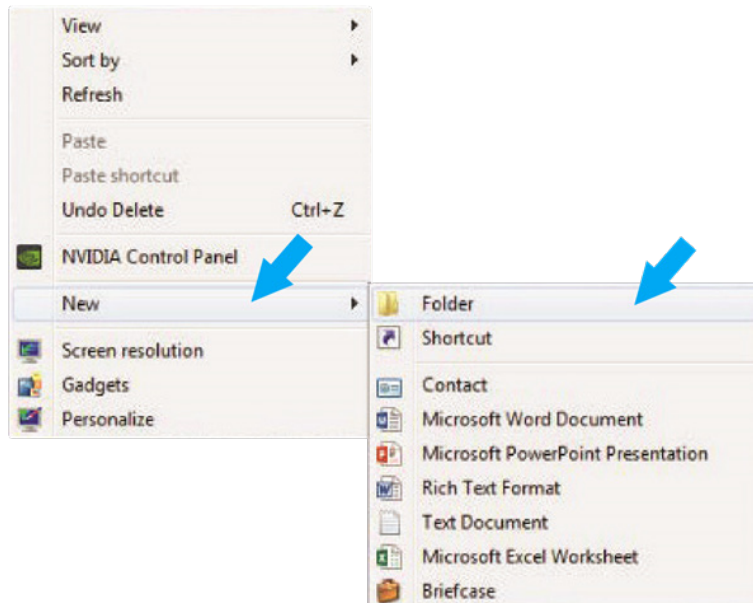
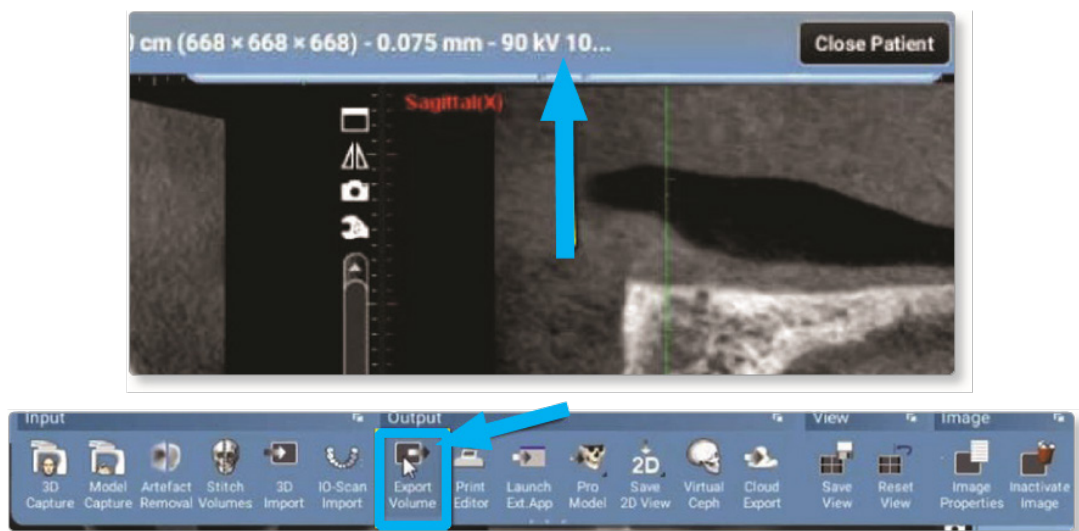


## Exporting from Planmeca

**STEP 1.** Right click on your desktop, select **NEW**, and click on **FOLDER**. Rename the folder to match the patient's name.

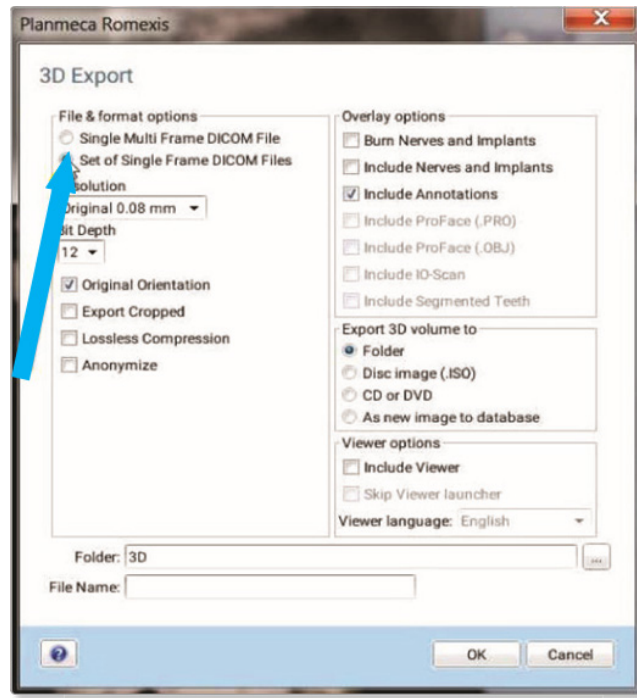


**STEP 2.** Next, open the patient's scan. At the top of the screen, hover over the drop down menu and in the Output section, select **EXPORT VOLUME**.

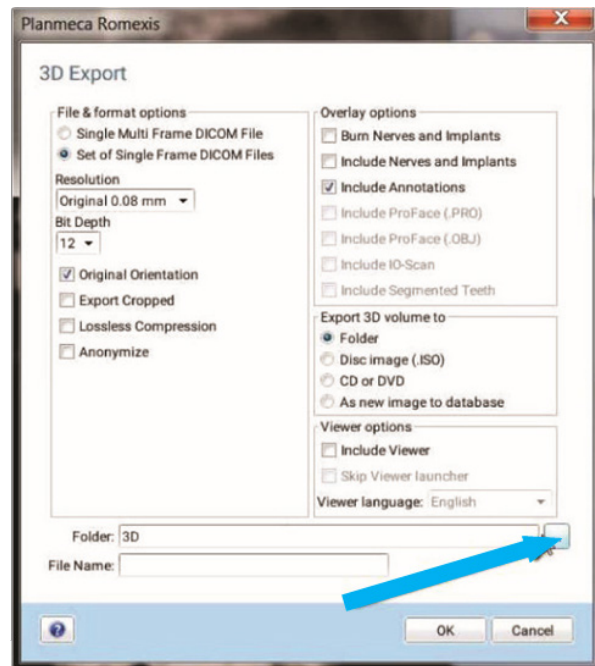


## Exporting from Planmeca

**STEP 3.** Select **SET OF SINGLE FRAME DICOM FILES** (no other option should have to be changed).

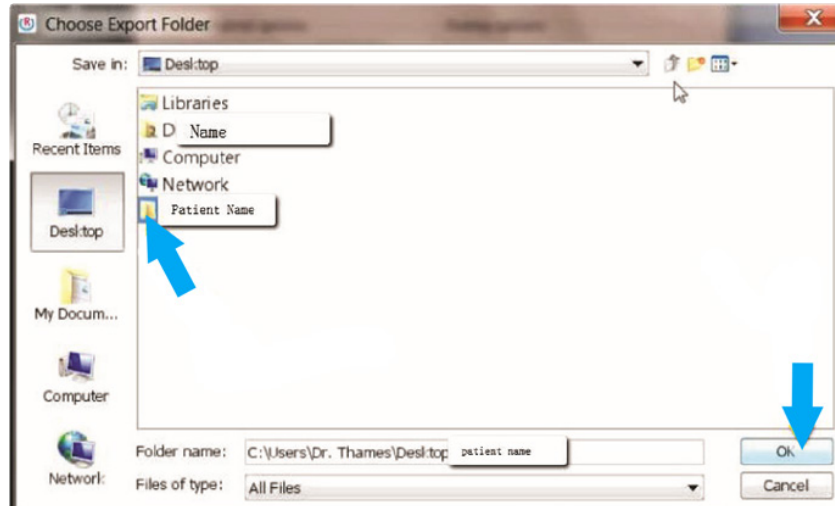


**STEP 4.** Click on the three dots on the lower right to choose where to export the files.

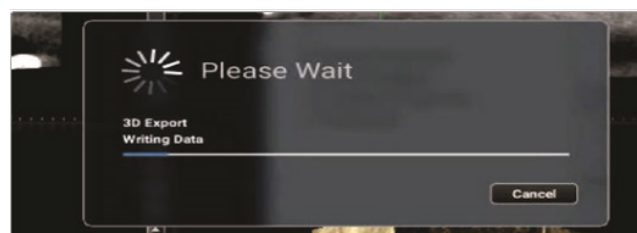
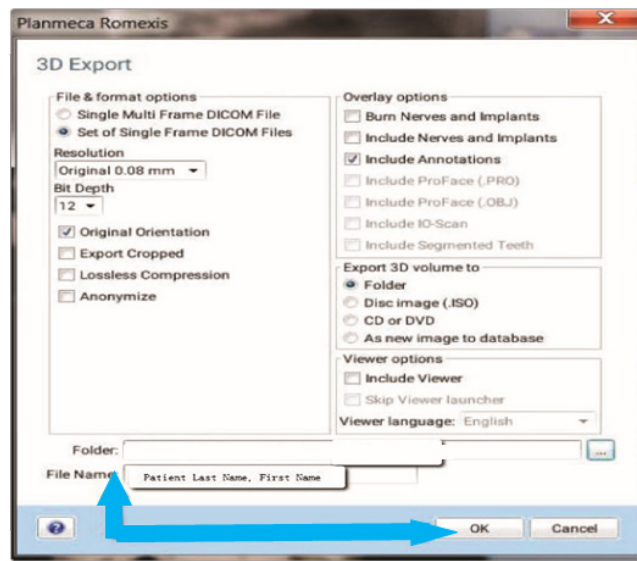


## Exporting from Planmeca

**STEP 5.** Select the patient folder on the desktop and click **OK**.

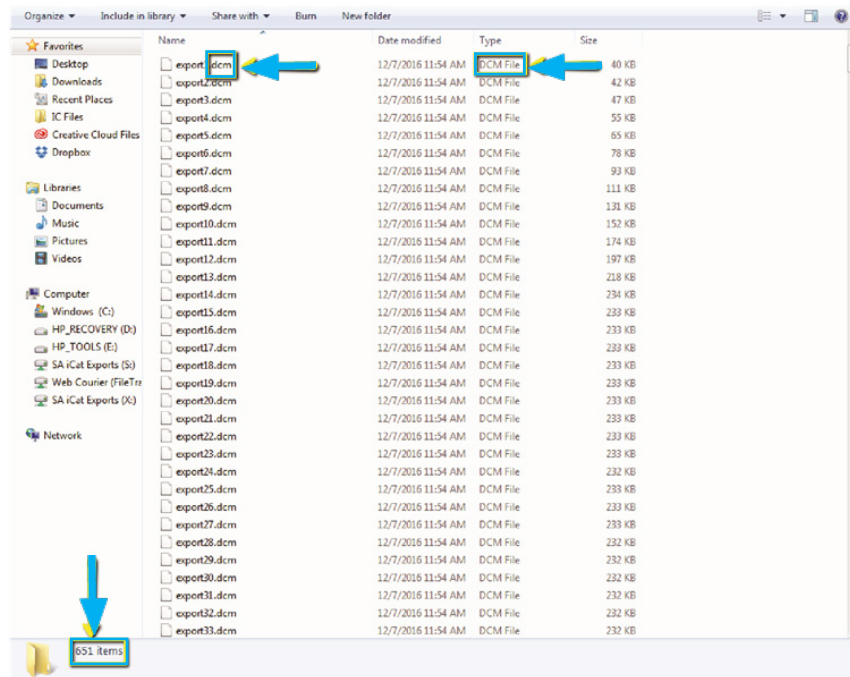


**STEP 6.** After the pop-up box disappears, under the file name, type the **PATIENT NAME**. Click **OK** and the files will begin exporting. Further information for exporting files can be found on this video: <https://vimeo.com/253317826>

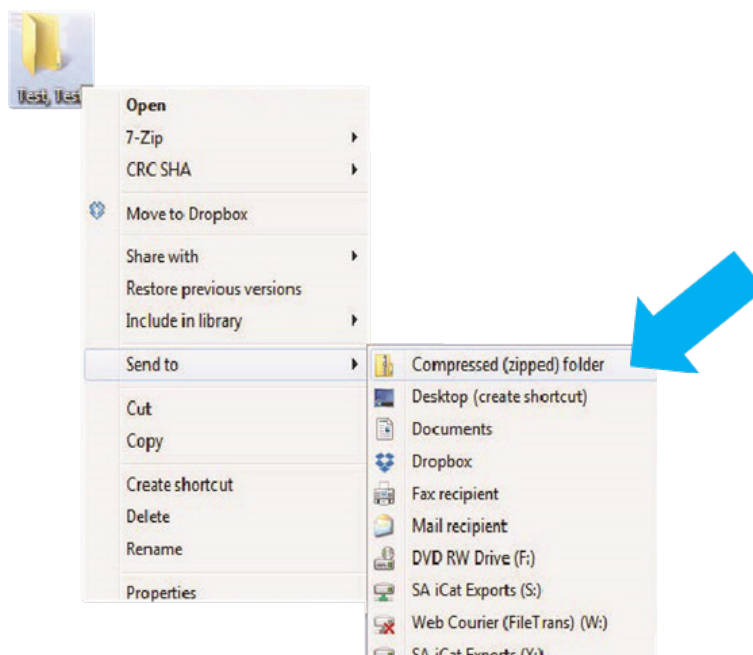


## Exporting from Planmeca

**STEP 7.** After the DICOM file exports and saves, go to the patient's folder and verify that the .dcm files were exported correctly (you should see 150 to 450 slices).

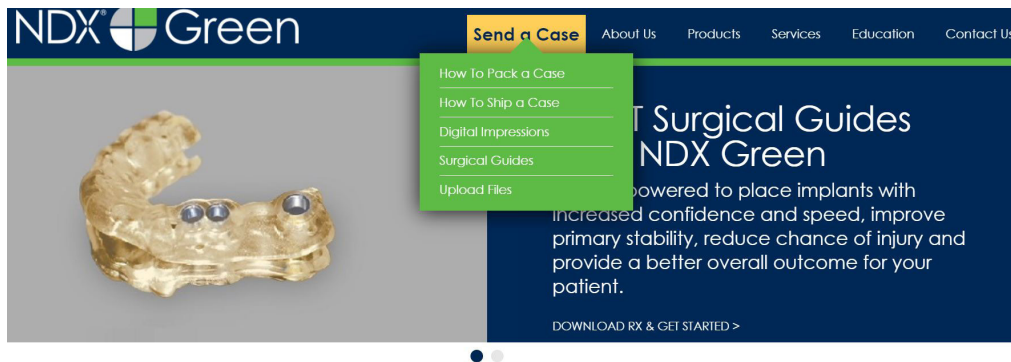


**STEP 8.** Right click on the patient folder you created on the desktop, select **SEND TO** and **COMPRESSED (ZIPPED) FOLDER**. A duplicate folder will be made with either a zipper or a blue "z."



## Exporting from Planmeca

**STEP 9.** You are now ready to upload your file to <https://ndxgreen.com>. Hover over **SEND A CASE** in the menu. Select **UPLOAD FILES**.



**STEP 10.** Select **CLICK TO ADD FILES** or Drag and Drop the file in the boxed area.

### Prepare your data for upload

Prior to sending us your data, please prepare your data for upload. We can accept anything you would like to send us including photos, DICOM data and other file types related to the cases you are submitting.

1. Maximum total file size = 2GB
2. If sending large volumes of data, please zip all files prior to sending.
3. Maximum 10 files can be uploaded at a time and upload time is dependent on your internet upload speed.
4. Make sure to note the patient name and doctor's name when uploading data. You can easily put this information in the subject or message folder.
5. Make sure you keep the page open until all files have been uploaded; closing the page will result in a failed upload attempt.
6. Upload progress will not be shown during upload if you are using Microsoft Edge browser.

*We do everything we can to make sure you can upload your files as quickly as possible. If you're experiencing a slow upload time, it may be due to exceptionally large files as well as your Internet Service Provider (ISP) or network connection.*

### Select Files To Upload

Drag & Drop or

Click to Add Files



## Exporting from Planmeca

**STEP 11.** Complete the form and click **UPLOAD FILES**. The upload process may take a few minutes.

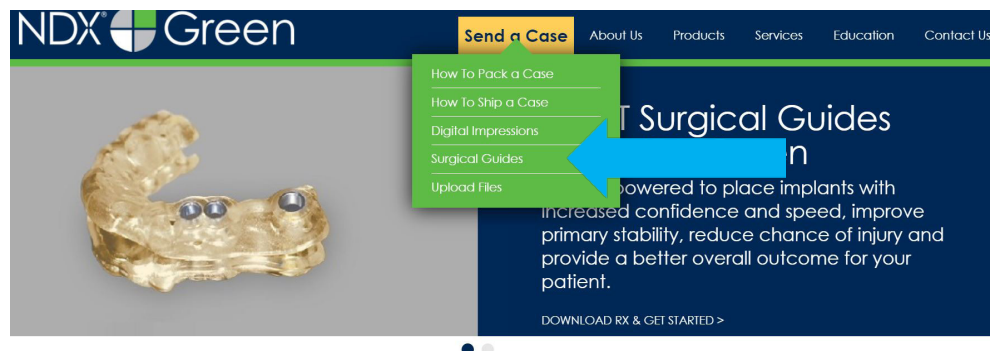


The screenshot shows a web form for uploading files. It includes the following fields:

- Email address\***: A text input field containing "name@example.com".
- Doctor's First Name\***: A text input field containing "First Name".
- Doctor's Last Name\***: A text input field containing "Last Name".
- Patient's First Name\***: A text input field containing "First Name".
- Patient's Last Name\***: A text input field containing "Last Name".
- Notes**: A text area containing "Additional case notes, patient info, references, special instructions, etc.".

At the bottom of the form is a green button labeled "Upload Files". A large blue arrow points from the right towards this button.

**STEP 12.** Go back to the menu, hover over **SEND A CASE** and select **Surgical Guides**.



## Exporting from Planmeca

**STEP 13.** Download and complete the **SURGICAL GUIDE RX FORM**. Include the **RX FORM** in your case when you send it to **NDX Green**.

### CBCT Surgical Guides

Take the guesswork out of your implant cases with a CBCT Surgical Guide from NDX Green. CBCT Surgical Guides empower you to place implants with increased speed, can improve primary stability, reduce chance of injury and provide a better overall outcome for your patient.

With our Surgical Guides, you will be able to perform surgery in a more expeditious manner, which is planned out digitally beforehand, allowing you to treat your patient more confidently.

Benefits of placing implants with an NDX Green CBCT Surgical Guide include:

- A live consultation with our implant experts to assist in surgical planning
- Guided surgeries are more efficient and precise
- Guides can be created with overlaying STL files for clear representation of dentition
- Our Surgical Guides are compatible with all guided systems from major implant manufacturers

Send NDX Green your next Surgical Guide case! Complete the [Surgical Guide RX Form](#) and [Upload Your Files](#).

