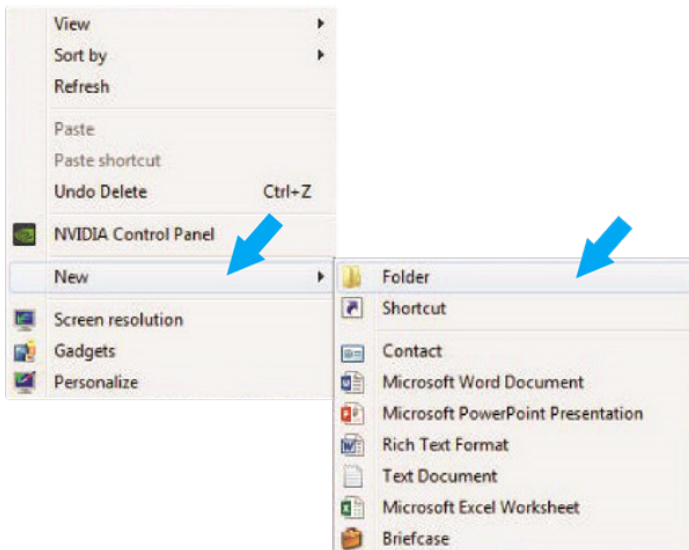
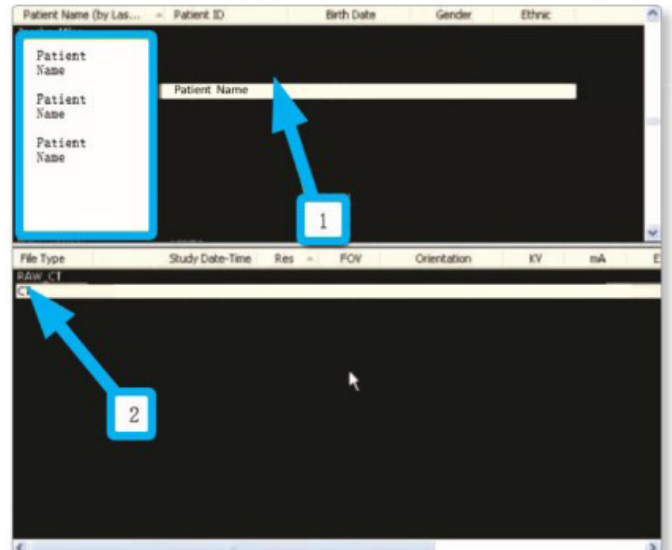


## Exporting from ICAT

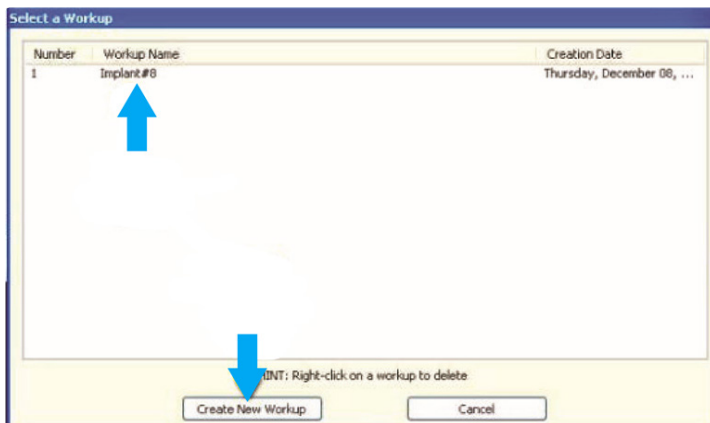
**STEP 1.** Right click on your desktop, select **NEW**, and click on **FOLDER**. Rename the folder to match the patient's name.



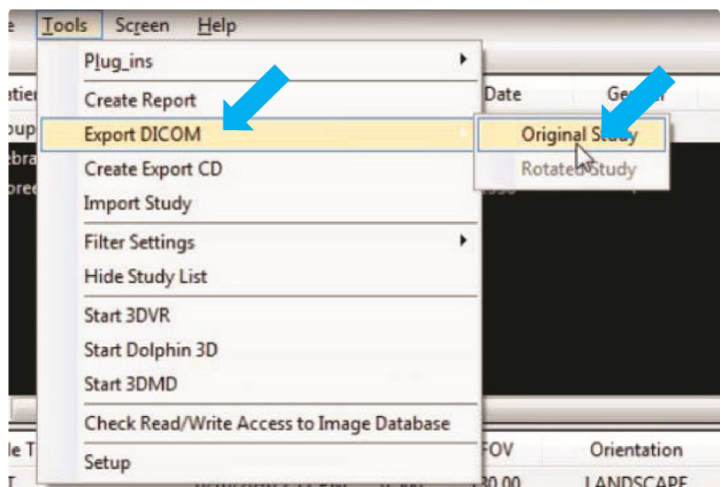
**STEP 2.** In the patient database, click on the **PATIENT NAME**. Under the **FILE TYPE**, click on **CT**.



**STEP 3.** Click on the file and select **CREATE NEW WORKUP**.

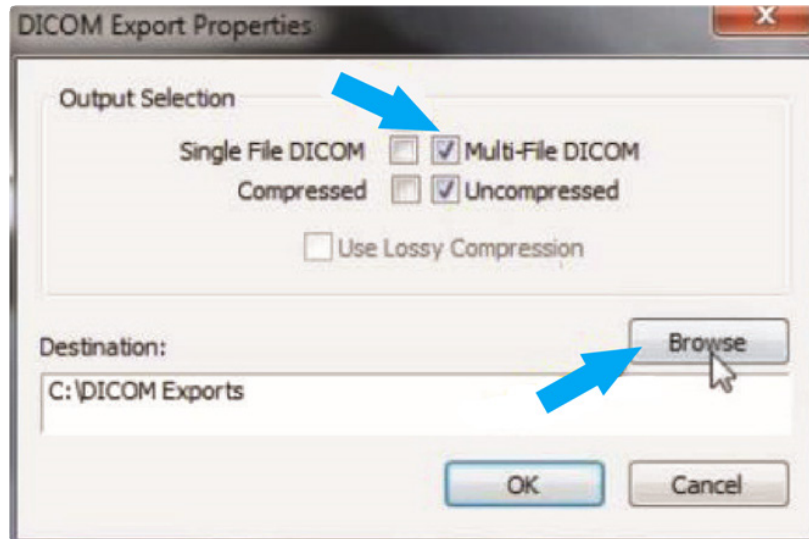


**STEP 4.** Once the patient's scans are loaded, select **TOOLS, EXPORT DICOM** in the upper left corner, and then select **ORIGINAL STUDY**.

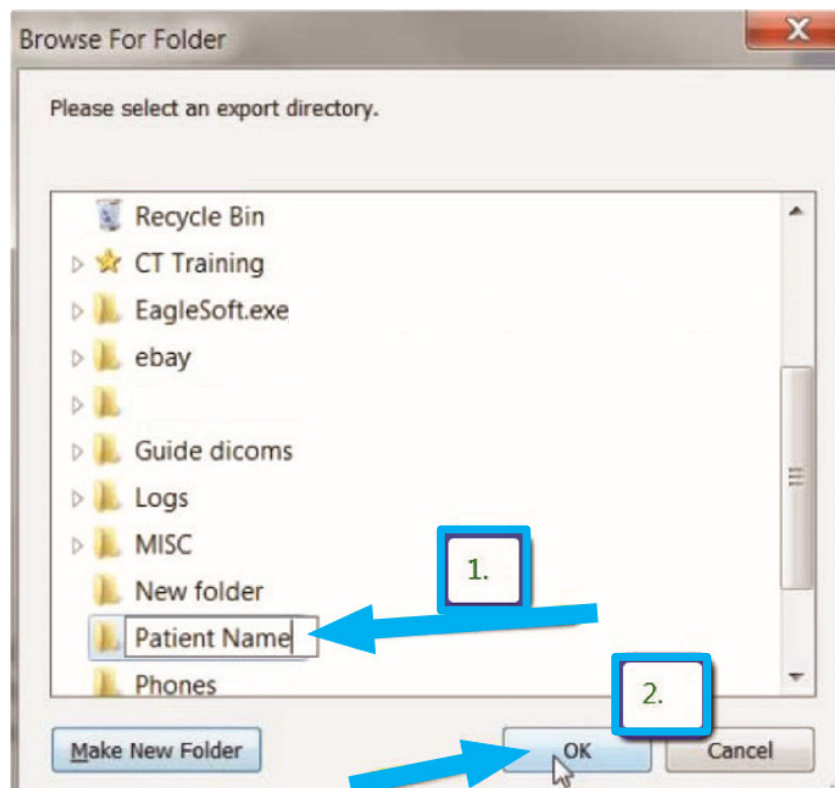


## Exporting from ICAT

**STEP 5.** Make sure **MULTI-FILE DICOM** and **UNCOMPRESSED** are selected. Next, click on **BROWSE** to choose the export location.

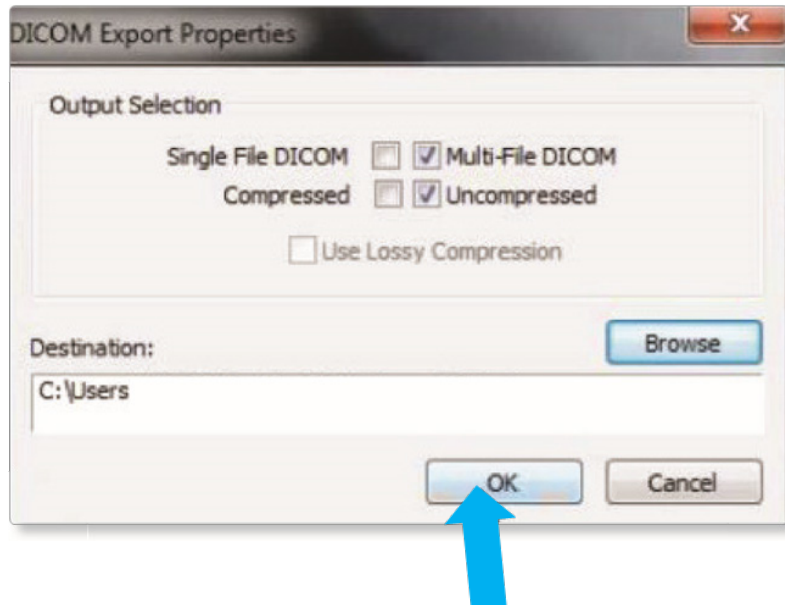


**STEP 6.** Select the desktop folder created in Step 1 and click **OK**.

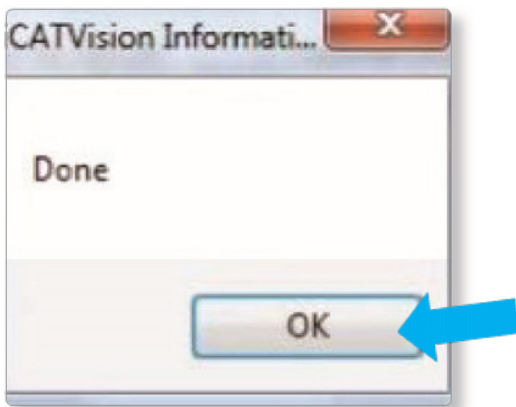


## Exporting from ICAT

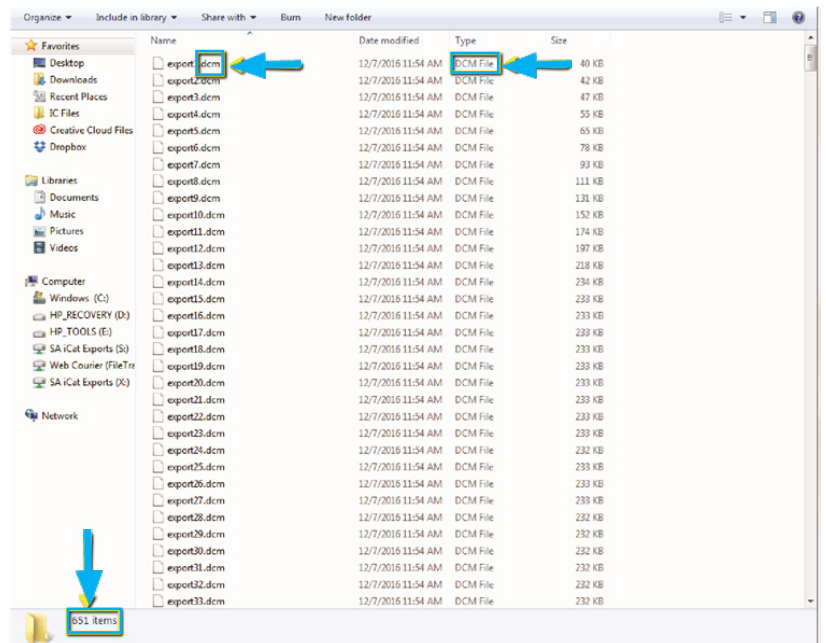
**STEP 7.** Click **OK** when you see the following screen. Your files will begin exporting.



**STEP 8.** Next, click on **OK** when the **DONE** screen appears.

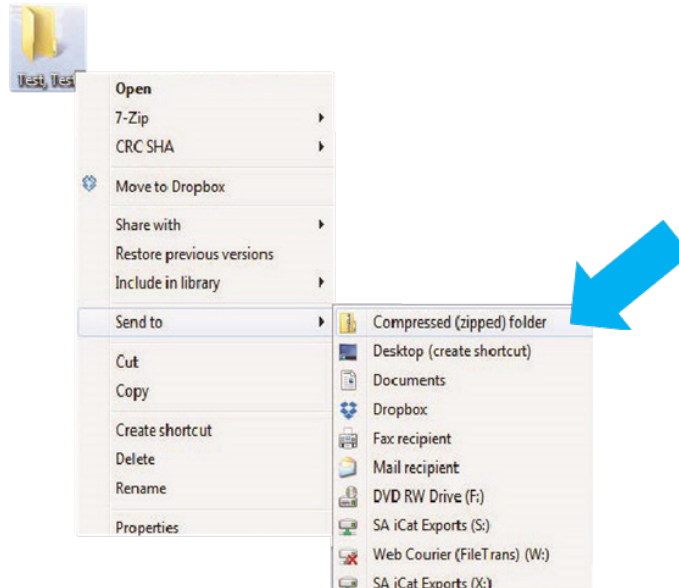


**STEP 9.** After the DICOM file exports and saves, go to the patient's folder and verify that the .dcm files were exported correctly (you should see 150 to 450 slices).

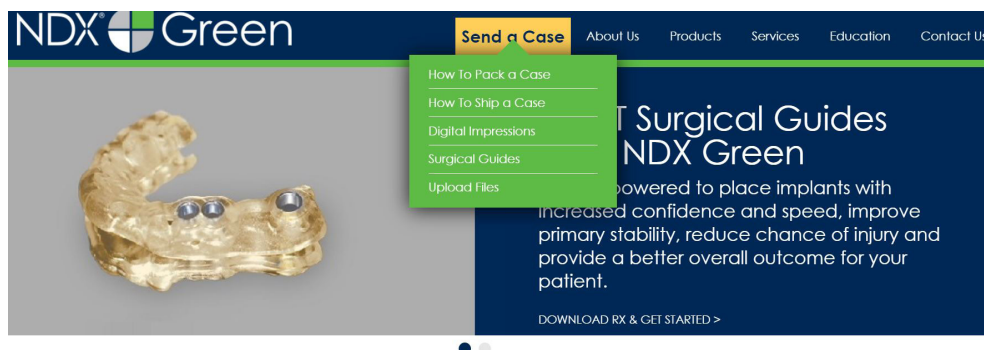


## Exporting from ICAT

**STEP 10.** Right click on the patient folder you created on the desktop, and select **SEND TO** and **COMPRESSED (ZIPPED) FOLDER**. A duplicate folder will be made with either a zipper or a blue “z.”



**STEP 11.** You are now ready to upload your file to <https://ndxgreen.com>. Hover over **SEND A CASE** in the menu. Select **UPLOAD FILES**.



## Exporting from ICAT

**STEP 12.** Select **CLICK TO ADD FILES** or Drag and Drop the file in the boxed area.

### Prepare your data for upload

Prior to sending us your data, please prepare your data for upload. We can accept anything you would like to send us including photos, DICOM data and other file types related to the cases you are submitting.


1. Maximum total file size = 2GB
2. If sending large volumes of data, please zip all files prior to sending.
3. Maximum 10 files can be uploaded at a time and upload time is dependent on your internet upload speed.
4. Make sure to note the patient name and doctor's name when uploading data. You can easily put this information in the subject or message folder.
5. Make sure you keep the page open until all files have been uploaded; closing the page will result in a failed upload attempt.
6. Upload progress will not be shown during upload if you are using Microsoft Edge browser.

*We do everything we can to make sure you can upload your files as quickly as possible. If you're experiencing a slow upload time, it may be due to exceptionally large files as well as your Internet Service Provider (ISP) or network connection.*

#### Select Files To Upload

Drag & Drop or

Click to Add Files



**STEP 13.** Complete the form and click **UPLOAD FILES**. The upload process may take a few minutes.

**Email address\***

**Doctor's First Name\***

**Doctor's Last Name\***

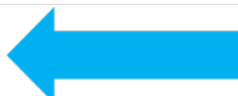
**Patient's First Name\***

**Patient's Last Name\***

**Notes**

Additional case notes, patient info, references, special instructions, etc.

Upload Files





## Exporting from ICAT

**STEP 14.** Go back to the menu, hover over **SEND A CASE** and select **Surgical Guides**.



**STEP 15.** Download and complete the **SURGICAL GUIDE RX FORM**. Include the **RX FORM** in your case when you send it to **NDX Green**.

### CBCT Surgical Guides

Take the guesswork out of your implant cases with a CBCT Surgical Guide from NDX Green. CBCT Surgical Guides empower you to place implants with increased confidence and speed, can improve primary stability, reduce chance of injury and provide a better overall outcome for your patient.

With our Surgical Guides, you will be able to perform surgery in a more expeditious manner, which is planned out digitally beforehand, allowing you to treat your patient more confidently.

Benefits of placing implants with an NDX Green CBCT Surgical Guide include:

- A live consultation with our implant experts to assist in surgical planning
- Guided surgeries are more efficient and precise
- Guides can be created with overlaying STL files for clear representation of dentition
- Our Surgical Guides are compatible with all guided systems from major implant manufacturers

Send NDX Green your next Surgical Guide case! Complete the [Surgical Guide RX Form](#) and [Upload Your Files](#).

