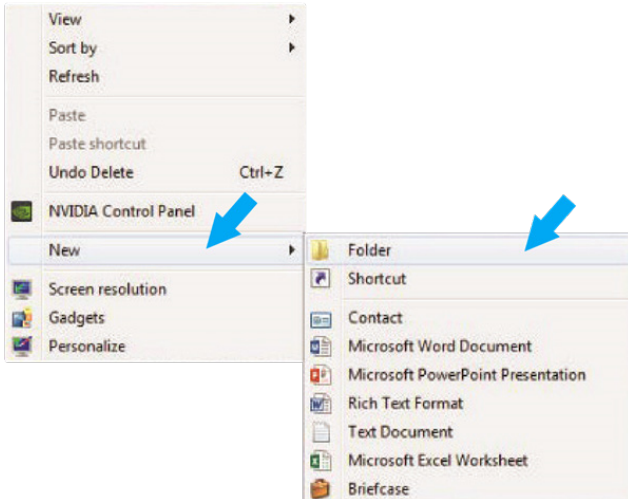


## Exporting from Carestream

**STEP 1.** Right click on your desktop and select **NEW**. Then, click on **FOLDER**. Rename the folder to match the patient's name.



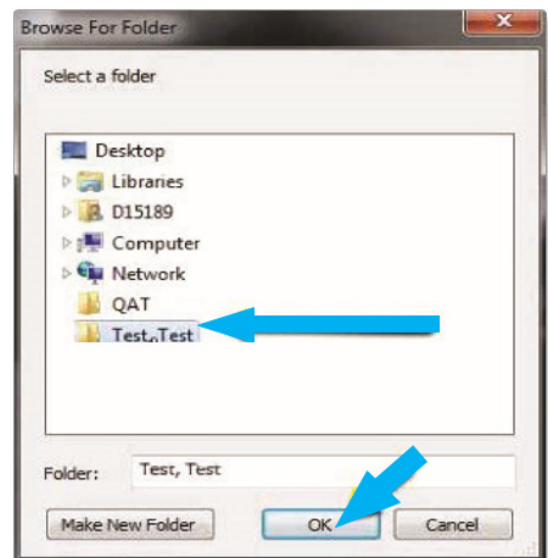
**STEP 2.** Open the scan image, and select the **EXPORT THE VOLUME** icon located on the left side of the screen.



**STEP 3.** In the pop-up window, there are three different sections. Click **BROWSE** in the first section to select the export location.

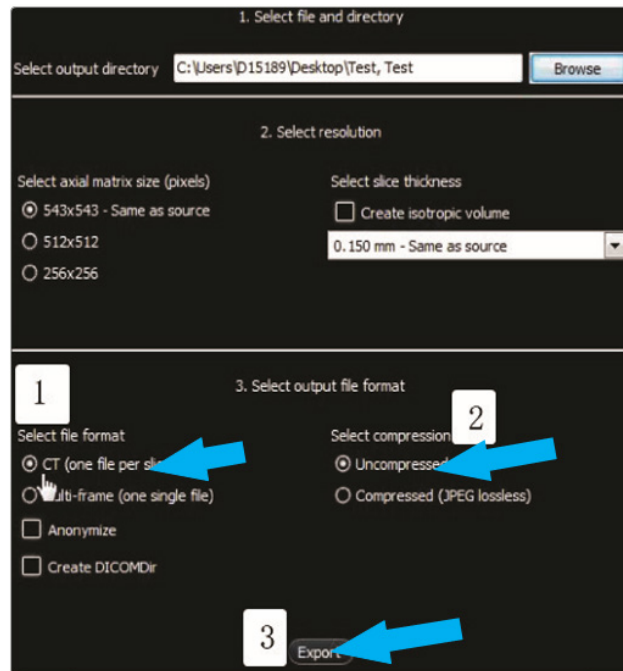


**STEP 4.** On the next screen, select the folder you just created on the desktop in Step 1 and select **OK**.

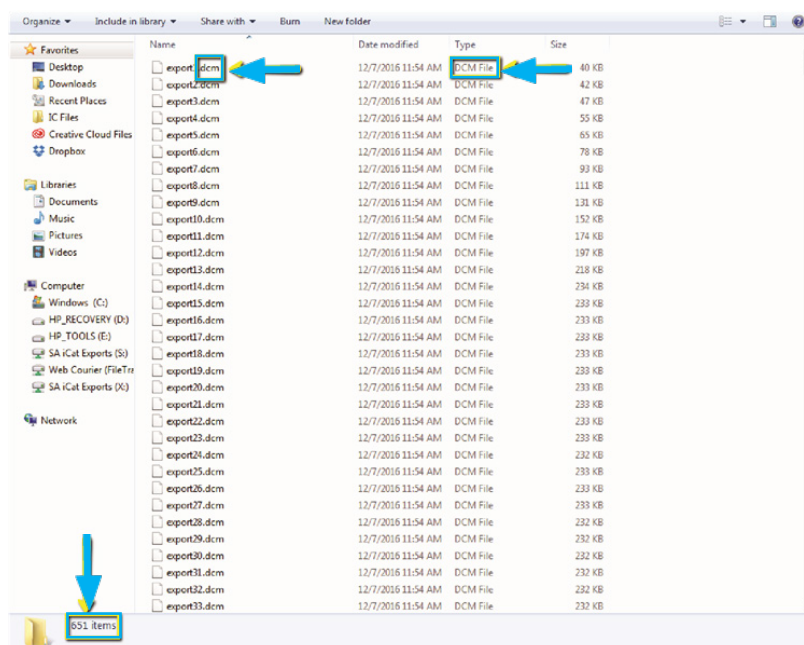


## Exporting from Carestream

**STEP 5.** Next, under Section 3, select **CT (ONE FILE PER SLICE)** and **UNCOMPRESSED**. Then, click **EXPORT** (Section 2 options should never have to be changed).

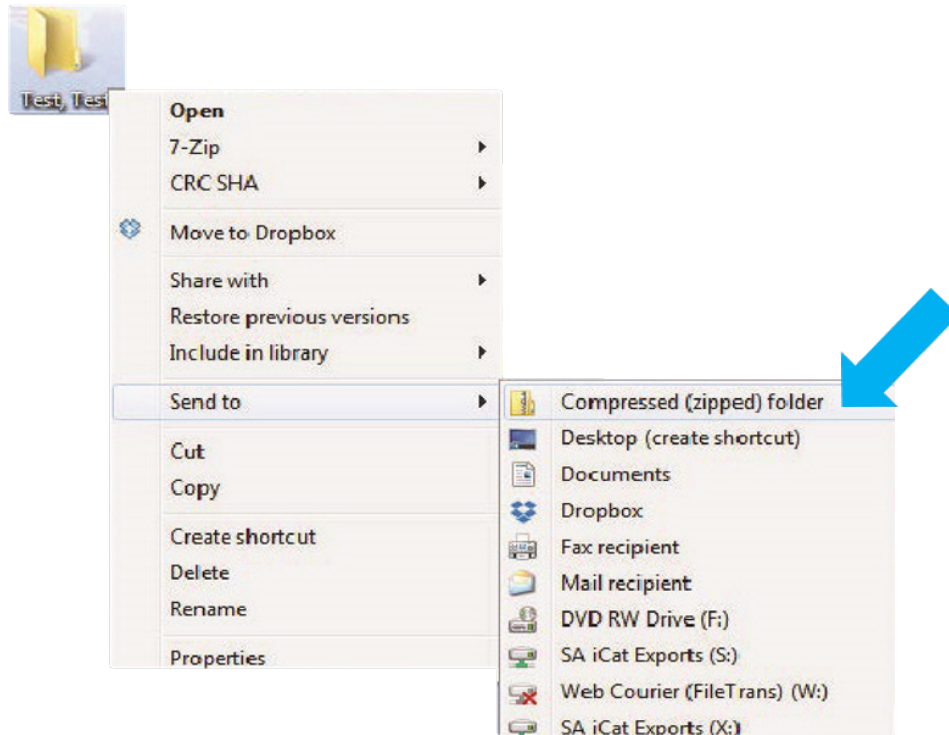


**STEP 6.** After the DICOM exports and saves, go to the patient's folder and verify that the .dcm files were exported correctly (you should see 150 to 450 slices).

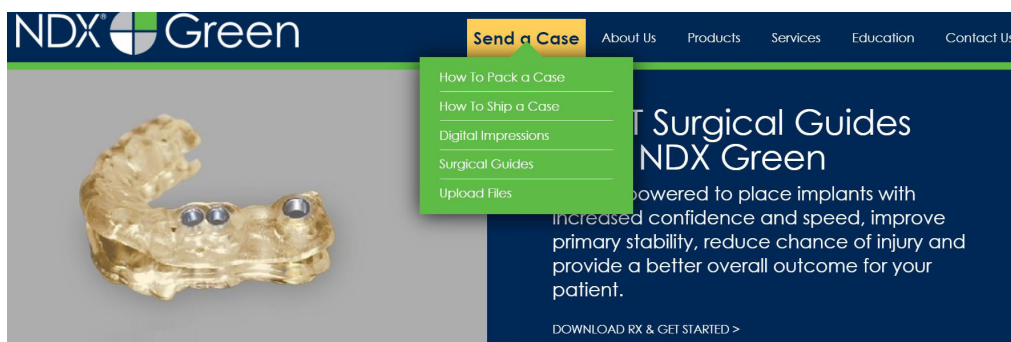


## Exporting from Carestream

**STEP 7.** Right click on the patient folder you created on the desktop, and select **SEND TO** and **COMPRESSED (ZIPPED) FOLDER**. A duplicate folder will be made with either a zipper or a blue “z.”



**STEP 8.** You are now ready to upload your file to <https://ndxgreen.com>. Hover over **SEND A CASE** in the menu. Select **UPLOAD FILES**.



## Exporting from Carestream

**STEP 9.** Select **CLICK TO ADD FILES** or Drag & Drop the file into the boxed area.

### Prepare your data for upload

Prior to sending us your data, please prepare your data for upload. We can accept anything you would like to send us including photos, DICOM data and other file types related to the cases you are submitting.


1. Maximum total file size = 2GB
2. If sending large volumes of data, please zip all files prior to sending.
3. Maximum 10 files can be uploaded at a time and upload time is dependent on your internet upload speed.
4. Make sure to note the patient name and doctor's name when uploading data. You can easily put this information in the subject or message folder.
5. Make sure you keep the page open until all files have been uploaded; closing the page will result in a failed upload attempt.
6. Upload progress will not be shown during upload if you are using Microsoft Edge browser.

*We do everything we can to make sure you can upload your files as quickly as possible. If you're experiencing a slow upload time, it may be due to exceptionally large files as well as your Internet Service Provider (ISP) or network connection.*

### Select Files To Upload

Drag & Drop or

Click to Add Files



**STEP 10.** Complete the form and click **UPLOAD FILES**. The upload process may take a few minutes.

**Email address\***

**Doctor's First Name\***

**Doctor's Last Name\***

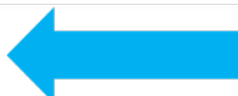
**Patient's First Name\***

**Patient's Last Name\***

**Notes**

Additional case notes, patient info, references, special instructions, etc.

Upload Files



## Exporting from Carestream

**STEP 11.** Go back to the menu, hover over **SEND A CASE** and select **Surgical Guides**.



**STEP 12.** Download and complete the **SURGICAL GUIDE RX FORM**. Include the **RX FORM** in your case when you send it to **NDX Green**.

### CBCT Surgical Guides

Take the guesswork out of your implant cases with a CBCT Surgical Guide from NDX Green. CBCT Surgical Guides empower you to place implants with increased confidence and speed, can improve primary stability, reduce chance of injury and provide a better overall outcome for your patient.

With our Surgical Guides, you will be able to perform surgery in a more expeditious manner, which is planned out digitally beforehand, allowing you to treat your patient more confidently.

Benefits of placing implants with an NDX Green CBCT Surgical Guide include:

- A live consultation with our implant experts to assist in surgical planning
- Guided surgeries are more efficient and precise
- Guides can be created with overlaying STL files for clear representation of dentition
- Our Surgical Guides are compatible with all guided systems from major implant manufacturers

Send NDX Green your next Surgical Guide case! Complete the [Surgical Guide RX Form](#) and [Upload Your Files](#).

