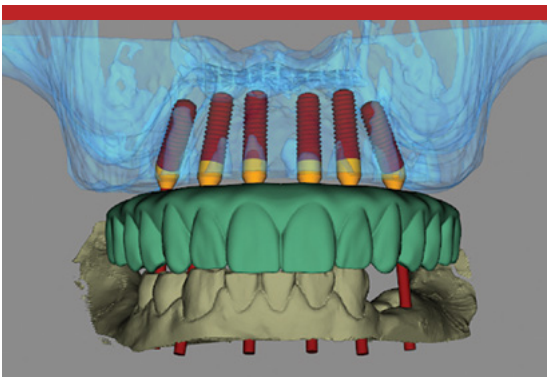


The Prosthetic Solution to Grow Your Practice – Immediate Loading of Full Arches with nSequence[®] Guided Technology

Differentiate your Practice by Offering a New Smile in One Day!

With the nSequence 3D guided surgical and restorative workflow for immediate loading of full arches, you are able to grow your practice by offering your patients the best standard of care, while giving them the beautiful smile that they desire. It is possible to completely treat your patient in as few as 2-3 restorative appointments!*



APPOINTMENT #1 - PATIENT RECORDS

All necessary records are sent to the NDX nSequence laboratory, including upper and lower PVS impressions (or digital intraoral scans of arches), a Blu-Mousse[®] bite registration, a patient CBCT scan with the Blu-Mousse bite in place, clinical photographs, tooth shade and a completed digital Rx form. Proper protocol should be followed based on whether or not the case is edentulous, terminally dentate or partially edentulous. Care should also be taken if there are no teeth behind the cuspids.

NEXT – A virtual treatment consultation is held between you, the surgeon and a laboratory implant surgical planner from nSequence. The case will be pre-planned digitally and reviewed from all clinical and biomechanical aspects. Everyone signs off on the case, and once everything is designed, a quality-tested, comprehensive nSequence kit is sent prior to surgery. The kit includes a Start Bite, Bone Foundation Guide, Surgical Guide, Bone Reduction Guide, Abutment Angulation Guide, customized components, and a long-term PMMA provisional that is reinforced with an integrated bar.

*May vary by implant team. Not all patients are candidates for an immediate loading procedure.

APPOINTMENT #2 - SURGERY

The patient undergoes surgery and either you or the surgeon captures the final implant position records using the customized clear bridge duplicate that is included in the kit. This allows for the fabrication of a full wax-up ready for try-in. Finally, the patient receives their long-term provisional restoration and leaves the appointment with their new smile. The surgery and restorative steps can be completed in as little as 1 ½ - 2 hours per arch.

APPOINTMENT #3 - RESTORATIVE

You confirm the aesthetic smile design set-up with your patient. Adjustments can be made to the wax set-up and light body impression material can be added to the intaglio surface to record the tissue anatomy after healing. If occlusion is adjusted, a new Blu-Mousse® bite registration is taken.

APPOINTMENT #4 - RESTORATIVE

You deliver the beautiful definitive restoration to your patient. The long-term provisional then becomes a back-up prosthesis (should the need arise).

It's that simple!

Ask your NDX representative or your implant team partners how you can achieve practice growth with Immediate Loading of Full Arches with nSequence® Guided Technology!

For more information, please contact us at 888.809.2777 or visit us at www.nsequence.com.

