

CT Guided Protocol

For CT Scanner + Intraoral Scanner

FULLY EDENTULOUS

1. Send Us The Digital RX Form Fully Filled Out

Completely fill out the online digital RX form found at www.nsequence.com or your case cannot be processed.

2. Patient CT Scan Wearing Denture with Markers

If the denture has a metal substructure, substitute the denture with a duplicate acrylic-only denture with six markers. Ensure the denture is fully seated. Reline the denture with Coe-Soft material to ensure a good seal. Insert gutta-percha or nSequence[®] marker spheres into the denture. Place at least six markers away from any reinforcing bar (if present) and away from any teeth. Scan the patient wearing a denture scan appliance while biting down on a bite registration at 0.3 voxel for 20 seconds. (Preferably 13cm field of view) If a denture is not possible, a wax rim may be fabricated as a suitable replacement.

3. Scan Duplicate Denture Only and Mail Duplicate Denture to nSequence

Remove the denture from the patient's mouth. Place the denture on a non-metallic platform (Styrofoam box or similar) and scan the denture by itself without a bite registration attached at 0.3 voxel. Make sure the denture is in full view of the CT scanner. Contours of the denture need to be visible in the CBCT scan. If the contours are not visible, rescan at a lower exposure.

4. Opposing Digital Impression

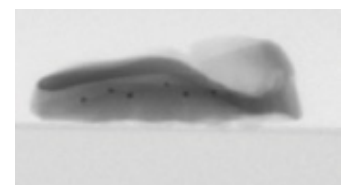
Use your COS scanner to take upper or lower digital opposing impressions. If the opposing is a denture, scan the denture only. Notify your service provider to send the data to nSequence. Be sure to capture vestibules and peripheral rolls, as anatomically distal and as accurately as possible. If a backup denture is requested, please capture an impression of the edentulous arch.

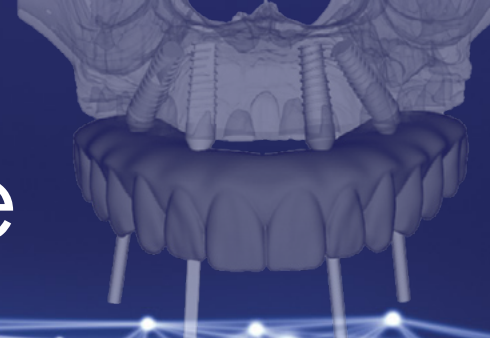
5. Capture Bite Against Opposing and Mail to nSequence

Use your intraoral scanner to take the bite of the denture against the opposing natural dentition. If a digital bite is not possible, please mail the complete bite registration relating the duplicate denture to the opposing arch. Mail the physical bite registration used in the patient's CBCT scan.

6. Send Us Photos & Shades

Send us digital clinical photographs of the patient and the desired shade.





CT Guided Protocol

For CT Scanner + Conventional Impressions

FULLY EDENTULOUS

1. Send Us The Digital RX Form Fully Filled Out

Completely fill out the online digital RX form found at www.nsequence.com or your case cannot be processed.

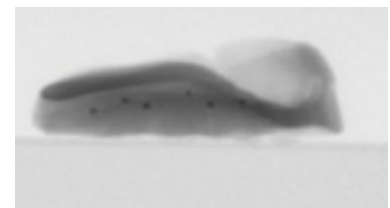
2. Patient CT Scan Wearing Denture with Markers

If the denture has a metal substructure, substitute the denture with a duplicate acrylic-only denture with six markers. Ensure the denture is fully seated. Reline the denture with Coe-Soft material to ensure a good seal. Insert gutta-percha or nSequence[®] marker spheres into the denture. Place at least six markers away from any reinforcing bar (if present) and away from any teeth. Scan the patient wearing a denture scan appliance while biting down on a bite registration at 0.3 voxel for 20 seconds. (Preferably 13cm field of view) If a denture is not possible, a wax rim may be fabricated as a suitable replacement.



3. Scan Denture Only

Remove the denture from the patient's mouth. Place the denture on a non-metallic platform (Styrofoam box or similar) and scan the denture by itself without a bite registration attached at 0.3 voxel. Make sure the denture is in full view of the CT scanner. Contours of the denture need to be visible in the CBCT scan. If the contours are not visible, rescan at a lower exposure.



4. Bite

Capture a full arch Blu-Mousse bite of the patient relating upper and lower dentition at a closed position. If the patient's opposing is a denture, be sure to use the denture as the opposing.

5. Opposing Impressions

Take full opposing VPS impressions of your patient. Be sure to capture vestibules and peripheral rolls, as anatomically distal and as accurately as possible. If the patient's opposing is a denture, please take an impression of the denture only. If a backup denture is requested, please capture an impression of the edentulous arch.



6. Send Us Photos & Shades

Send us digital clinical photographs of the patient and the desired shade.

