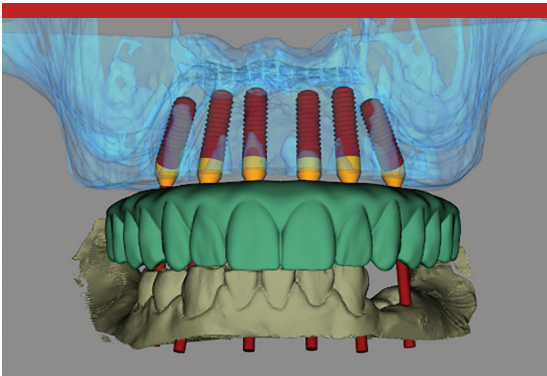


## The Prosthetic Solution to Grow Your Practice – Immediate Loading of the Full Arches with nSequence<sup>®</sup> Guided Technology

### *Differentiate your Practice by Offering a New Smile in One Day!*

With the nSequence 3D guided surgical and restorative workflow for immediate loading of the full arches, you are able to grow your practice by offering your patients the best standard of care, while giving them the beautiful smile that they desire. It is possible to completely treat your patient in as few as 2-3 restorative appointments!\*



### APPOINTMENT #1 - PATIENT RECORDS

All necessary records are sent to the NDX nSequence laboratory, including upper and lower PVS impressions (or digital intraoral scans of arches), a Blu-Mousse<sup>®</sup> bite registration, a patient CBCT scan with the Blu-Mousse bite in place, clinical photographs, tooth shade and a completed digital Rx form. Proper protocol should be followed based on whether or not the case is edentulous, terminally dentate or partially edentulous. Care should also be taken if there are no teeth behind the cuspids.

**NEXT** – A virtual treatment consultation is held between you, the surgeon and a laboratory implant surgical planner from NDX nSequence. The case will be pre-planned digitally and reviewed from all clinical and biomechanical aspects. Everyone signs off on the case, and once everything is designed, a quality-tested, comprehensive nSequence kit is sent prior to surgery. The kit includes a Start Bite, Bone Foundation Guide, Surgical Guide, Bone Reduction Guide, Abutment Angulation Guide, customized components and two Lucitone<sup>®</sup> Long Term Provisionals (one for the day of surgery and the other for the Definitive restoration).

\*May vary by implant team. Not all patients are candidates for an immediate loading procedure.

## APPOINTMENT #2 - SURGERY

The patient undergoes surgery, and either you or the surgeon captures the final implant position records using one of the two Long Term Provisionals that are included in the kit. The patient leaves with one of the Long Term Provisionals as their new smile. The second Long Term Provisional is used at the first restorative appointment to simplify the fabrication of the Definitive prosthesis. The surgery and restorative steps can be completed in as little as 1 1/2 - 2 hours per arch.

## APPOINTMENT #3 - RESTORATIVE

The restorative dentist takes a final impression of the existing Long Term Provisional, records a new bite registration and takes a new impression of the opposing arch. These records are sent to NDX nSequence® for fabrication of the Definitive prosthesis. The second Long Term Provisional is then delivered and any occlusal adjustments are made. The patient is dismissed with a new, duplicate Long Term Provisional.

## APPOINTMENT #4 - RESTORATIVE

You deliver the beautiful Definitive restoration to your patient. Both Long Term Provisionals become back-up prostheses (should the need arise).

**It's that simple!**

**Ask your NDX representative or your implant team partners how you can achieve practice growth with immediate loading of the full arches with nSequence Guided Technology!**

**For more information, please contact us at 888.809.2777 or visit us at [www.nsequence.com](http://www.nsequence.com).**



NDX nSequence | 6980 Sierra Center Parkway, Suite 100 | Reno, NV 89511 | 888.809.2777

© 2020 NDX National Dentex Labs. All Rights Reserved.

Blu-Mousse is a registered trademark of Parkell, Inc. Lucitone is a registered trademark of Dentsply Sirona, Inc.  
nSequence is a registered trademark of National Dentex, LLC.

Rev. 8/2020