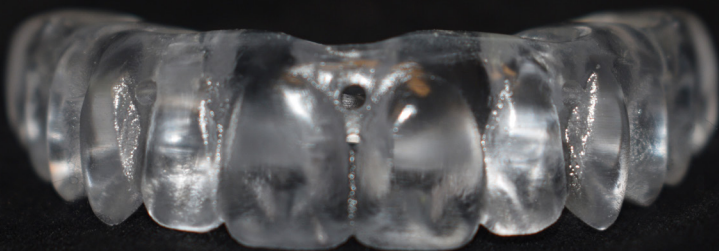


# NDX<sup>®</sup> nSequence

**Clear Duplicate Bridge Protocol For  
Definitive Prosthesis Fabrication**

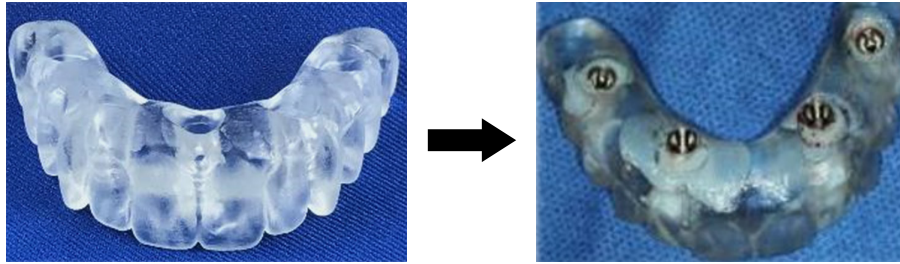




# NDX nSequence® Clear Duplicate Bridge Protocol For Definitive Prosthesis Fabrication

All restorative appointment photos courtesy of Dr. Marko Kamel, Woodbury, Minnesota

The Clear Duplicate Bridge Protocol is designed to reduce the number of appointments and simplify the restorative phase for fabricating the definitive prosthesis. At the first restorative appointment, the Clear Duplicate Bridge will function as an all-in-one verification jig, bite block, set-up/try-in and final impression. If the Clear Duplicate Bridge was picked-up on the day of surgery with the second set of Temporary Cylinders provided in the nSequence Guided Prosthetics® Kit, then the Clear Duplicate Bridge will record the same position of the implants as they are in the Long Term Provisional.

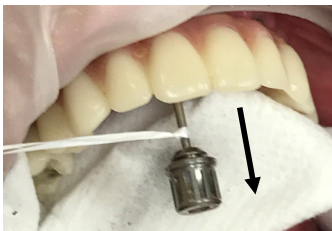


**NOTE:** If the Clear Duplicate Bridge is not used on the day of surgery to pick-up the second set of Temporary Cylinders, please contact NDX nSequence for the proper protocol.

## FIRST RESTORATIVE APPOINTMENT: The Clear Duplicate Bridge Protocol

The advantage of the Clear Duplicate Bridge Protocol is the ability to accomplish several restorative steps during the first appointment for fabricating the definitive restoration.

The following steps will guide you through this appointment for verifying the implant positions, recording the final occlusion and for capturing the anatomy of the healed tissues as they relate to the Long Term Provisional.



### STEP 1: Remove the Long Term Provisional

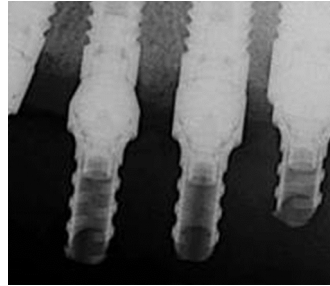
**NOTE:** To remove the prosthetic screws, a short driver may be needed for the posterior implant sites and a long driver may be needed for the anterior implant sites.



### STEP 2: Seat the Clear Duplicate Bridge

■ First, relieve the tissue side of the Clear Duplicate Bridge by about 1-2mm. This will help to ensure there is a slight gap for impression material to accurately capture the healed anatomy of the alveolar ridge.

**TIP:** Apply tray adhesive to this area.



- Second, seat the Clear Duplicate Bridge and hand-tighten the prosthetic screws. Confirm a complete and proper seat by taking a radiograph.

**NOTE:** If there is an implant/abutment site where the Temporary Cylinder is not completely seated, remove that Temporary Cylinder from the Clear Duplicate Bridge, reseal it onto the Multi-Unit Abutment, then reseal the Clear Duplicate Bridge and syringe new bis-acryl material to lute/bond the Temporary Cylinder into its corrected position.



### STEP 3: Evaluate the Aesthetics

- First, add or remove material on the Clear Duplicate Bridge as desired.
- Second, take notes on the prescription form of the desired changes to the tooth position, tooth arrangement and/or tooth mold.



### STEP 4: Check Clear Duplicate Bridge Occlusion

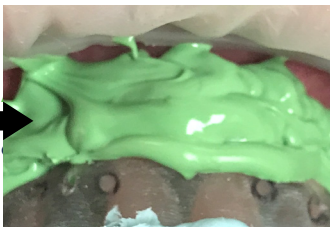
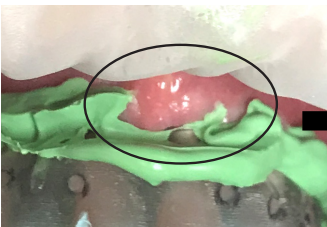
Any occlusal adjustments made on the Long Term Provisional during the integration period will need to be captured in the Clear Duplicate Bridge at this appointment.

- First, adjust the occlusion as needed.
- Second, take a full arch Blu-Mousse® bite registration.



### STEP 5: Final Impression

- First, syringe light body (or medium body) PVS impression material from the buccal through to the palatal/lingual aspects of the Clear Duplicate Bridge.
- Second, ensure there is enough material so as to capture the entire alveolar ridge and onto the buccal, capturing all aspects of the transition line (where the definitive prosthesis will meet/contact the tissues).



**INACCURATE:** The full anatomy of the alveolar ridge is NOT completely captured.

**ACCURATE:** The full anatomy of the alveolar ridge is completely captured.

## STEP 6: Remove the Clear Duplicate Bridge and Seat the Long Term Provisional



The prosthetic screws for the Clear Duplicate Bridge should be sent to the laboratory. Place them in a crown box to prevent loss or damage during shipment.



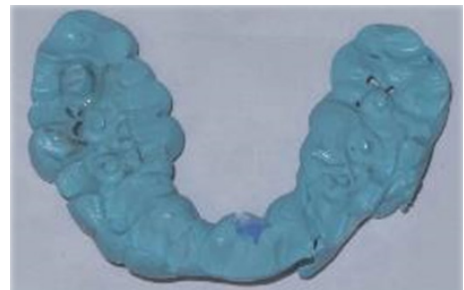
Seat the Long Term Provisional with the same prosthetic screws that were initially removed and block out the screw access holes.



Seal the screw access holes with a material of your choice.

## STEP 7: Send the Clear Duplicate Bridge to the Laboratory

Include the new full arch Blu-Mousse® bite registration, the Multi-Unit Abutment Analogs, the prosthetic screws and the Clear Duplicate Bridge. Complete a prescription form detailing any changes/modifications, along with post-op photos and any other references that may assist the laboratory in providing an optimal definitive prosthesis.



## SECOND RESTORATIVE APPOINTMENT: Wax Set-Up for Try-In

Utilizing the new records, the laboratory will fabricate a screw-retained wax set-up for try-in.

- First, remove the Long Term Provisional and seat the wax set-up. Confirm the occlusion and aesthetics, and make any adjustments as necessary.
- Second, return the wax set-up to the laboratory for fabrication of the definitive prosthesis. If a second try-in is desired, note the comprehensive details of the changes on the prescription form.

**TIP:** A night guard would be advantageous for all definitive prostheses. This is especially true with the screw-retained hybrid prosthetic (Denture Teeth with Acrylic) with a titanium bar.

## THIRD RESTORATIVE APPOINTMENT: Deliver the Definitive Prosthesis

- First, remove the Long Term Provisional and seat the definitive prosthesis. Many clinicians will place new prosthetic screws when delivering the definitive prosthesis.
- Second, follow standard protocols for delivering the definitive prosthesis.

**NOTE:** The Long Term Provisional will be an excellent backup prosthesis should the definitive prosthesis need to be sent to the laboratory for repair or future modifications (e.g., replacement of the denture teeth for a screw-retained hybrid).

# NDX<sup>®</sup> nSequence

6980 Sierra Center Parkway, Suite 100  
Reno, NV 89511  
888.809.2777  
[nSequence.com](http://nSequence.com)



The professionals at **National Dentex Labs** have the unique ability to provide specialized services and local assistance on all of our products supported by our national network that includes dedicated aesthetic and technology laboratories.

© 2019 NDX National Dentex Labs. All Rights Reserved.